

PROTOCOL FOR THE TREATMENT OF LYME DISEASE (LYME BORRELIOSIS)

PLASMATROHN + CDS

JUNE 2022



A. KALCKER

Confidential. All rights reserved®.

LYME DISEASE IS A BACTERIAL INFECTION THAT IS ACQUIRED FROM THE BITE OF AN INFECTED TICK. USUALLY, THE FIRST SYMPTOM IS A RASH THAT MAY LOOK LIKE A RASH, BUT NOT EVERYONE GETS THIS RASH.

BORRELIA IS A GENUS OF RELATIVELY LARGE, HELICAL, SPIRAL GRAM-NEGATIVE BACTERIA OF THE SPIROCHETE GROUP.

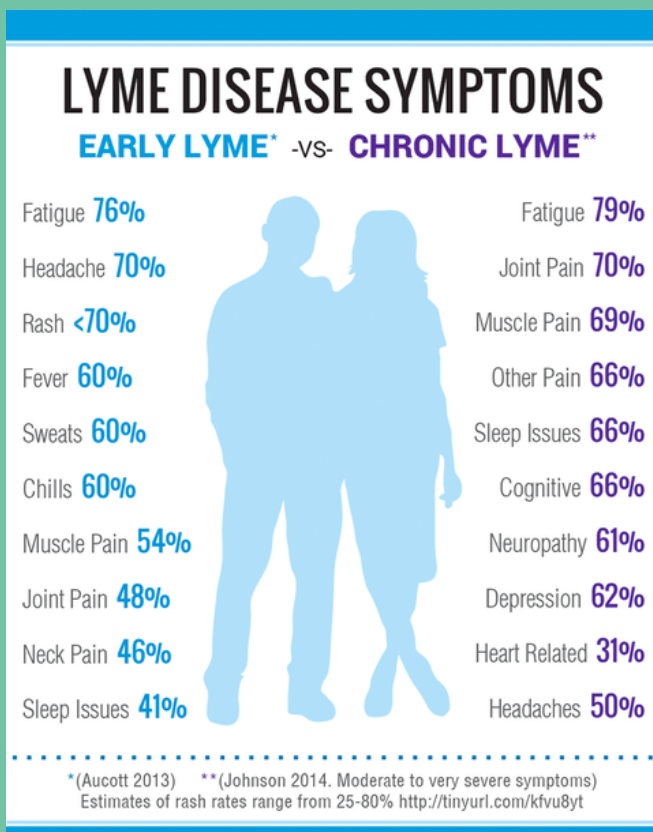


FIRST STAGE OF THE DISEASE

In stage I Lyme disease, general symptoms may occur in addition to migratory redness, such as:

- Weakness
- Headaches
- Joint pain
- Muscle aches
- Fever
- Inflammation of the lymph nodes
- Conjunctivitis

If the nervous system also suffers from *Borrelia* infection, this is known as neuroborreliosis, which manifests as meningitis and inflammation of the nerve roots (so-called meningo-polyneuritis or Bannwarth's syndrome). In neuroborreliosis, symptoms such as pain, paralysis, and neurological deficit can occur from the nerves of the spinal cord. In some cases, a single body nerve is also inflamed (so-called peripheral neuropathy). However, inflammation can also paralyze facial nerves (so-called facial nerve paresis). A typical symptom of such paralysis is a unilaterally depressed area of the mouth.



LYME BORRELIOSIS CAN ALSO AFFECT THE HEART. IT INVOLVES INFLAMMATION OF THE HEART MUSCLE AND PERICARDIUM, TRIGGERING THE TYPICAL CARDIAC ARRHYTHMIA.

PARTS OF THE EYES CAN ALSO BECOME INFLAMMATED, SUCH AS THE SKIN OF THE MIDDLE EYE (SO-CALLED UVEITIS).

STAGES II & III

In stage II Lyme disease, in addition to the above symptoms, a rare appearance of the skin may occur: the so-called benign cutaneous lymphadenosis. The skin swells and forms several red and blue spots several centimeters in size. It occurs mainly on the earlobes, nipples and scrotum.

Stage III Lyme disease occurs months or years after the bite of the tick (or also of the mosquito whose vector is usually cattle, this fact is not yet scientifically published but has been observed in the Netherlands in dairy cows). This very severe stage of Lyme disease is characterized by so-called Lyme arthritis and an additional involvement of the nervous system.

Lyme arthritis is an intermittent or chronic inflammation of the joints. This may involve a single joint (monoarthritis) or several joints simultaneously (oligoarthritis). The knee joints are particularly frequently inflamed. Tendon and muscle pain may be present, but it is often difficult to distinguish from other diseases. In stage III Lyme borreliosis, the skin of the hands and feet sometimes becomes very thin and bluish (so-called Herxheimer atrofica acrodermatitis atrofica). The nerves may also suffer further damage. In rare cases, stage III Lyme disease is so severe that parts of the body are paralyzed. Many of these cases are mistaken for sclerosis, leading patients to the wheelchair.

FOUR DIFFERENT SPECIES OF BORRELIA CAN CAUSE LYME DISEASE: THESE BELONG TO THE SO-CALLED BORRELIA-BURGDORFERI-(SENSU LATO)-(SENSU LATO) COMPLEX, COMPOSED OF:

- BORRELIA BURGDORFERI
- BORRELIA GARINII
- BORRELIA AFZELII
- BORRELIA SPIELMANII

SPIROCHETES ARE SENSITIVE TO OXIDANTS.

Spirochetes are sensitive to oxidants such as chlorine dioxide and the SUCCESSFUL TREATMENT PROTOCOL to date is as follows:

1.- In principle, patients take for 1 week protocol C (in severe cases accompanied with protocol E). The aim is oxygen saturation, reducing the bacterial load and thus accustoming the body to chlorine dioxide.

2.- The subsequent outpatient treatment is a total of 4 intravenous infusions during a period of time of 4 to 8 days depending on the case, of 1 to 2 drops per second in a line of 20 with a concentration of 50 ppm in 500 ml (for 4 days) of isotonic saline. In case of flebitis or very sensitive persons it is preferable to do an 8-day protocol with 250ml of solution.

**IMPORTANT *: During the infusion time the patient is lying down near the PLASMATROHN with the "Borreliosis" program running. The duration of the program is approximately one hour. The routines and subroutines follow each other automatically in a preprogrammed sequence.*



PLASMATROHN® CREATES SUCH A CELLULAR RESONANCE THAT SPIROCHETE BACTERIA ARE FORCED TO LEAVE THEIR INTRACELLULAR HIDING PLACE AND, FINDING THEMSELVES IN A CHLORINE DIOXIDE-LADEN ENVIRONMENT, DIE BY OXIDATION. IN A CHLORINE DIOXIDE-LADEN ENVIRONMENT, THEY ARE KILLED BY OXIDATION. THE PATIENT THEN USES THE BIOTROHN WITH THE "BORRELIA" PROGRAM FOR 2 TO 3 WEEKS, ONCE OR TWICE A DAY, ACCOMPANIED BY ORAL CDS PROTOCOL C.

PROTOCOL, BY PRAKTIJK BEAUMONT

-USE OF CDS-

Important information:

CDS (chlorine dioxide solution) or CDL (chlorine dioxide solution) is not a drug or dietary supplement, but is used to purificate drinking water.

This document is not a medical protocol, but can be used as a general guideline at your own general guidance at your own risk.

The product is then immediately ready for use and should always be kept in the refrigerator. Take a clean glass bottle. With an injection syringe, add ½ or 1 ml of CDS to half a liter of water. Drink this half liter throughout the day from 9 am to 4 pm. It does not depend on a specific time.

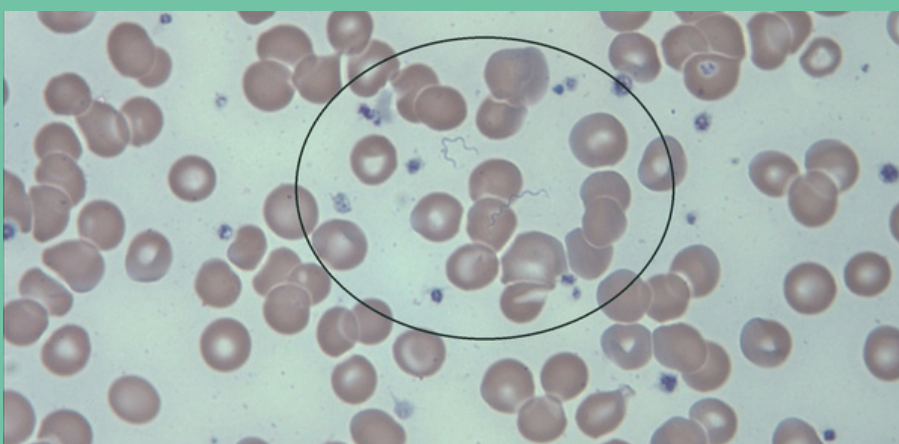
- The next day add 2 ml, and the following day 3 ml until reaching 7 ml.
- Then go to 8 ml and add it to 1 liter of water.
- The next day, 9 ml, 10 ml until it is at 15 ml. Always in 1 liter of water.
- Use 15 ml for 5 days. Then use 5 ml in ½ liter of water until the last day of frequency therapy. the last day of the frequency therapy.

The dose accumulation is different for each situation. If the reaction is very strong, one or two days should be kept at the current dose level.

Please contact a Plasmatrohn professional if you have reached 10 to 11 ml to receive frequency therapy.

On days when taking CDS, high doses of vitamin C cannot be consumed, as its effects will be nullified. For example, if you stop taking CDS in the late afternoon, you can use vitamin C in the evening.

CAUTION! By taking MMS, CDS or colloidal silver you may experience a Herxheimer's reaction. It is normal to feel a little uncomfortable when you have a headache, get dizzy and are very tired. Your body is cleansing itself. The reaction can sometimes be very strong and scary. If you are not sure, contact a professional. This way you will avoid having a strong Herxheimer reaction, which means that more is released than your body can break down.



WHAT IS A HERXHEIMER REACTION?

WHILE TAKING DIETARY SUPPLEMENTS, SYMPTOMS MAY INCREASE DUE TO A JARISCH HERXHEIMER REACTION. A SUDDEN INCREASE IN SYMPTOMS MAY OCCUR WITHIN A FEW HOURS, THE NEXT DAY OR WITHIN A FEW WEEKS OF STARTING TREATMENT. THE HERXHEIMER REACTION IS CAUSED BY THE DEATH OF THE BACTERIA. IF THE BODY DETOXIFIES TOO QUICKLY AND RELEASES MORE TOXINS THAN IT CAN EXCRETE, HEADACHES, NAUSEA, VOMITING AND OTHER DISCOMFORT CAN OCCUR.

WHILE THESE REACTIONS DO NOT TEND TO LAST TOO LONG, OR BE SERIOUS AND PREVENT SOMEONE FROM REACHING THE HEALING GOAL, IT IS TRUE THAT WHEN YOU DON'T KNOW WHAT IS HAPPENING, IT CAN MAKE YOU THINK THERE IS A DELAY IN PROGRESS, EVEN WHEN IT IS NOT. OTHER REACTIONS MAY INCLUDE FATIGUE, FLU-LIKE SYMPTOMS, CHILLS, FEVER, NIGHT SWEATS, MUSCLE AND JOINT PAIN, DEPRESSION, MEMORY PROBLEMS, SKIN RASHES, HEADACHES, NAUSEA AND A GENERAL FEELING OF MALAISE.

IF A HERXHEIMER REACTION OCCURS, REDUCE THE NUMBER OF DROPS AND THEN SLOWLY START AGAIN.